

- **Nominations are being accepted until January 13<sup>th</sup>.**  
**Nominate an outstanding educator today!**

The Chamber's Franklin Initiative invites you to nominate a deserving individual or program in these award categories:

### Outstanding Educator...

Recognize an individual teacher, program director, counselor, administrator or instructional staff at any state-accredited school within Monroe County. Bloomington-based **Solution Tree** will donate to each awardee an **all-expenses-paid inservice** to any **Solution Tree** training seminars offered throughout the U.S....*plus \$500 cash* to the awardee's school!

### Leading Light...

Recognize an innovative or exemplary program that enhances our education community.

- **Anyone may make nominations!**  
*...including colleagues, parents, students and the general public.*

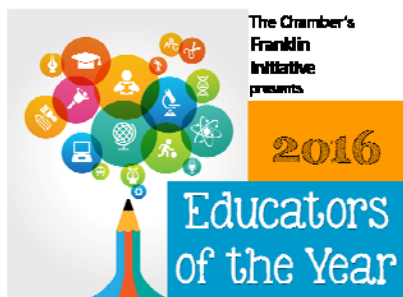
● **All nominations are kept confidential and awardees will be notified prior to the event.**  
**Sorry, previous awardees are not eligible. See nomination form for complete instructions.**  
Visit [franklininitiative.com](http://franklininitiative.com) for list of past awardees or to download nomination forms.

The Chamber & its Franklin Initiative program invite you to attend the  
**15th Annual Educators of the Year Dinner & Awards**  
**February 24 ● 6:30 - 8:00 p.m. ● Franklin Hall on the I.U. campus**

Submit all nominations/inquiries to:

Jacob Summer, Franklin Initiative SPEA Fellow ● 812.336.6381 ● [jsummer@ChamberBloomington.org](mailto:jsummer@ChamberBloomington.org)  
Greater Bloomington Chamber of Commerce 400 West 7th St., Suite 102 Bloomington, IN 47404





# Nomination Form

Select one award category and provide all information requested.

## NOMINATOR INFORMATION (required)

Your Name: \_\_\_\_\_ Date: \_\_\_\_\_

Phone: \_\_\_\_\_ Email: \_\_\_\_\_

Your Affiliation: \_\_\_\_\_

### Things to remember:

Nominations must be received by 4:00 p.m. on January 13.

A separate nomination form must be submitted for each nominee and category.

Incomplete or insufficient narratives are the most common reason candidates are not selected.

Limit your nomination and supporting materials to four (4) pages.

Submit all nominations/ inquiries to:

Jacob Summer, Franklin Initiative SPEA Fellow  
The Greater Bloomington Chamber of Commerce  
400 W. 7<sup>th</sup> Street, Suite 102, Bloomington, Indiana 47404

812.336.6381  
[jsummer@ChamberBloomington.org](mailto:jsummer@ChamberBloomington.org)

Past awardees and additional nomination forms may be downloaded:

[Franklininitiative.com](http://Franklininitiative.com)

## Outstanding Educator...

Recognizes an individual teacher, program director, counselor, administrator or instructional staff at any state-accredited school within Monroe County.

Nominee's Name: \_\_\_\_\_

School: \_\_\_\_\_ Title: \_\_\_\_\_

Email: \_\_\_\_\_ Phone: \_\_\_\_\_

**Narrative - (required):** On separate pages, please address how the nominee fits all three criteria listed below (please label each section). Winning narratives provide multiple examples of excellence and explain how the nominee has gone beyond what is expected in his or her job.

### Nominations should address the following topics:

How does the educator impact students?

How does the educator work to advance the profession?

Is the educator involved in the community?

Please ...limit nomination and supporting materials to four (4) pages.

## Leading Light...

recognizes an innovative or exemplary program that enhances our education community.

Program Nominated: \_\_\_\_\_

Program's Primary Contact's Name: \_\_\_\_\_

Email: \_\_\_\_\_ Phone: \_\_\_\_\_

**Narrative - (required):** On separate pages, please address the following questions, in detail, numbering each response.

1. Describe the program.
2. How is this program innovative and/or exemplary?
3. In what ways does the program work with the larger community? (i.e. business, parents, nonprofit organizations, volunteers, intergenerational activities)
4. What is your personal experience with this program? How has it benefited students?
5. Please include any additional comments or information that you would like us to consider.